

Sealing, gutters and damming heights

For floor-to-ceiling façades, it is extremely important that the extension details be constructed with due care, in particular to meet structural requirements such as thermal separation or water and steam impermeability.

The substructure of the air-lux façade elements is designed so that the outer waterproof layers can be adhered directly to the substructure. The required adhesive flanges are adapted by air-lux to the different construction scenarios and the substructure is manufactured accordingly.

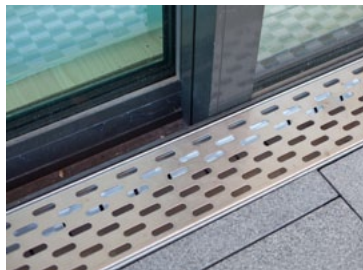
Depending on the exterior surface used, different versions are possible:

Closed surface (stone slab)

Here the installation of a gutter is advisable. This is adapted to the building situation; the cover plates can be manufactured with different hole patterns. Instead of the cover plate, the stone surface can be extended up to the façade if the surface water is able to drain off.



Stone slab



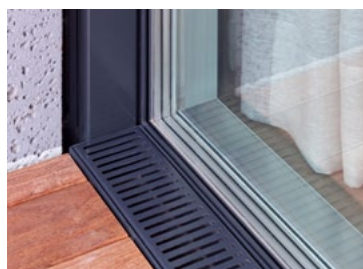
Gutter

Open surface (terrace grate)

Depending on the soil composition, a slope falling away from the façade and a sufficient number of drains may be adequate. Otherwise a gutter should be installed.



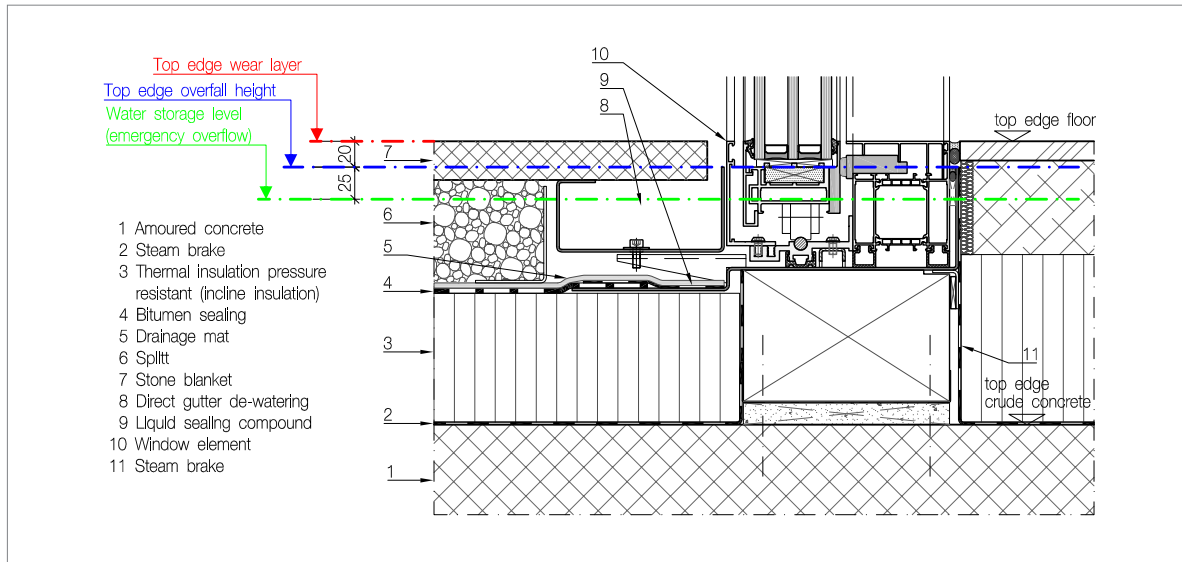
Terrace grate



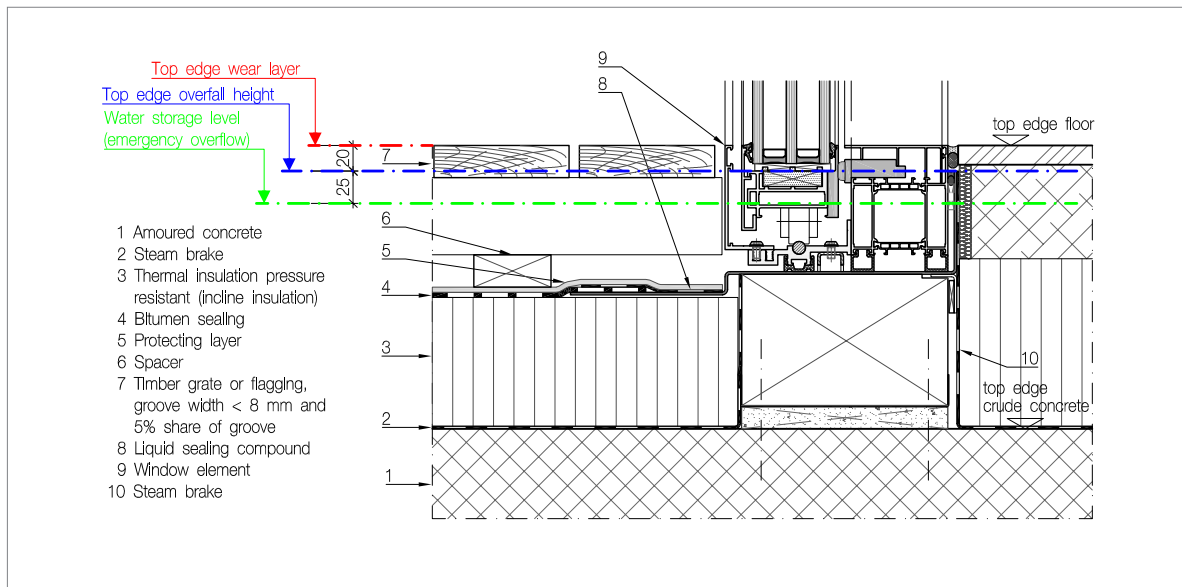
Gutter

Seals and damming heights for components without sills

Version A (drainage via gutter)



Version B (drainage via top layer)



Air-Lux Technik AG
 Breitschachenstr. 52
 9032 Engelburg
 Switzerland

T +41 71 272 26 00
 F +41 71 272 26 01
 info@air-lux.ch
 www.air-lux.ch