



KRAPF

Metal and façade construction



Krapf AG
Breitschachenstrasse 52
9032 Engelburg, Switzerland

+41 71 272 26 00
info@krapfag.ch
www.krapfag.ch

Producer of
air-lux®

**Great things
happen when
visionaries
meet doers.**



Complete service provider and professional project partner



As a complete service provider and professional project partner for architects, façade planners, general contractors and building owners, we offer sustainable solutions that impress architecturally, technically and functionally. Those who work with us can count

on our trust, openness and reliability. These are the values we embody on a daily basis in order to offer the best solutions to our customers and partners. We use our many years of expert knowledge in metal construction and glass façades to meet and exceed expectations – from the first contact to the moment we hand over the completed building.

Craftsmanship and technology

Through precise craftsmanship, we create the perfect construction from metal and glass – façades that impress aesthetically, technically and functionally. Since we were founded in 1964, this approach has helped us become one of the leading Swiss metal and façade engineering companies, with currently more than 80 employees. As a professional complete service provider and reliable project partner for architects, façade planners, general contractors and building owners, Krapf AG develops optimum solutions to overcome any challenge.

In 2004, Krapf AG developed air-lux – the uncompromising glass façade system with sliding floor-to-ceiling windows and a patented pneumatic sealing concept. To date, air-lux has been installed more than 5,000 times all around the world. air-lux is one of many innovations that we plan, manufacture, and install directly on-site. Find out more over the following pages – or in a personal consultation at our premises in Engelburg.



Thoroughly planned and perfectly implemented

Krapf AG has built a reputation for top quality services that impress architecturally, technically and functionally.

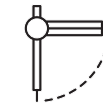
We combine creativity, technology and craftsmanship in exceptional projects with glass façades. This is combined with extensive expertise, creative problem-solving skills and professional service at every phase of the project – from the initial consultation to our after-sales service.



1. Consultation

Whether you come to us with a simple job or a visionary idea, we will support you and your plans with technical expertise and experience.

To ensure planning security, we also provide reliable cost estimates for your projects at an early stage.



2. Planning

As a professional project planner with years of practical experience, we provide our wealth of knowledge of construction, materials, structural engineering and building requirements from as early as the planning phase

if required. This allows us to work together to develop and implement designs that are perfectly optimised for production and assembly, and which impress through their aesthetics and construction.



3. Production

Ambitious metal structures, particularly in combination with glass, demand a high degree of production precision. Our highly trained

staff, state-of-the-art machinery and efficient infrastructure allow us to guarantee top quality.



4. Installation

Precise, on-time installation at the construction site is our best business card. Professional coordination and communication with the trades involved is just as important as the quality of

our own work. Only when everyone on-site works together with the required level of care can uncompromisingly good results be achieved.



5. Service

We value full service and total customer satisfaction. Our outstanding range of services includes supplying spare parts, maintaining

and servicing components to retain their function and value, and a number of additional services.

Innovation is our tradition



FHS St.Gallen

The base and tower of FHS St.Gallen form a hybrid structure that has become a new landmark in the town of St.Gallen. The characteristic floor-to-ceiling box windows flood the rooms with plenty of daylight and with their excellent sound insulation values ensure optimum conditions in the classrooms and library areas.



Service

Façade engineering

Façade construction

Project-specific solution
of insulated aluminium profiles

Facts

- 67 metres high
- 912 floor-to-ceiling box windows with ventilation leaves
- Two large areas of skylight glazing
- Hinged outer glazing with textile sun protection behind





Bleicherweg 21 Zurich

Krapf AG was commissioned with the complete renovation of the exterior glazing and the planning coordination of the façade elements, natural stone and blinds. Whereas the ground floor was implemented as a transom-mullion façade, the higher floors impress with their floor-to-ceiling glazing.



Service
Façade engineering, renovation

Façade construction
Insulated aluminium window construction

- Facts**
- Seven floors
 - Aluminium strip windows, triple glazed with insulated clear glass
 - Improved break-in resistance on ground floor and top floor
 - Floor-to-ceiling glazing on attic floor, lift-and-slide doors
 - Various metal construction work

Modissa clothing store Zurich

A façade renovation that is an architectural eye-catcher while preserving the building's protected landmark. The transom-mullion façade of architectural bronze on the lower floors blends in perfectly with the higher floors, where the electrochromic glazing can be darkened in several stages.



Service

Façade engineering, protected landmark renovation

Façade construction

Insulated architectural bronze profiles

Facts

- Seven floors
- Architectural bronze façade on the ground and first floor, glass-only joints
- Electrochromic glass on the second to fifth floors
- air-lux architectural bronze sliding windows on attic floor



Natural History Museum St.Gallen

The extensive parallel hinged windows integrated into this façade are unique and meet the most stringent requirements. They were developed specially by Krapf AG as part of a customised solution for heat and smoke extraction and ventilation purposes. When closed, the windows lie flush against the outer surface of the corrugated exposed concrete façade.



Service

Façade engineering, special solution

Façade construction

Project-specific solution of insulated aluminium profiles

Facts

- 24 motorised parallel hinged windows, smoke and heat extraction/RC2/weight up to 2 tonnes
- 18 fixed glazed elements
- Textile exterior shading
- Internal, integral black-out
- Aluminium outer doors
- Energy requirements: Minergie-P Eco, blower door test

Spital Zollikerberg

The west wing of Zollikerberg hospital, with its privileged views over the park, was replaced with a modern, 100 metre long new construction built to the Minergie standard. The building envelope was designed as an element façade and blends into its surroundings thanks to the reflective glass façade.

Service

Façade engineering

Façade construction

Element façade

Facts

- Four floors
- Façade area of 3,500 m²
- Hinged casement windows
- Textile sun protection



White Cube Vaduz

The free-standing Weisser Würfel (White Cube) is regarded as a successful extension of the existing black Kunstmuseum Liechtenstein. Its cubic shape, design and façade material celebrate the common bond between the two buildings. This has created an urban development attraction that captivates visitors with the interior's superlative spatial and lighting comfort.



Service

Façade engineering

Façade construction

Special construction of insulated aluminium profiles

Facts

- Flush-mounted strip windows, triple glazed with insulated glass
- All-glass corner constructions
- Integrated sun protection, glare protection





Service

Façade engineering,
metal construction

Façade construction

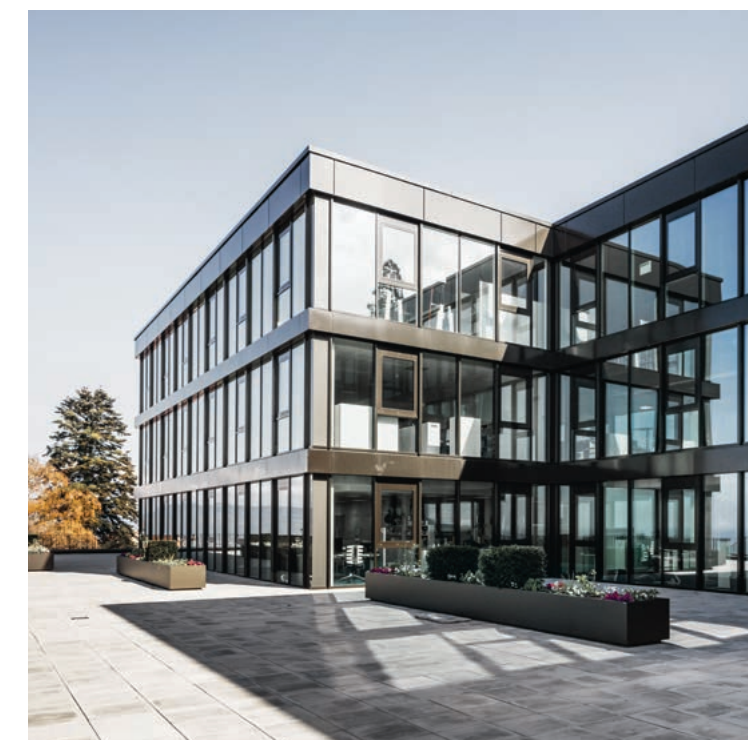
Transom-mullion construction
in aluminium

Facts

- 4,100 m² façade, glass and Alucobond cladding
- Fire protection, metal construction work, rear-ventilated sheet-metal façade
- Doors and windows with heat and smoke extraction

Just Schweiz AG Walzenhausen

The size, location and function of the building presented special challenges in terms of the exterior appearance. This challenge was overcome by deftly breaking up the volumetrics with varying façade depths, projecting bands, shadow plays and changes in material. A fascinating building envelope that reflects the wealth of expertise offered by Krapf AG.





One-One Cham

The One-One towers impress with their elegance and size. Krapf AG was responsible for the entire façade's planning, production and assembly. The façade uses air-lux sliding windows, able to remain tightly sealed even under extremely high wind loads, which means they are predestined for the construction of high-rise buildings.



-
- Service**
Façade engineering
-
- Façade construction**
Rear-ventilated Alucobond façade
-
- Facts**
- Two towers, 46 and 49 metres high, 13 and 14 floors
 - 6,200 m² of glass and Alucobond
 - 58 air-lux sliding windows

SRF site Zurich Leutschenbach

As part of the Leutschenbach site development, a first stage of construction saw completion of the SRF technology centre. This new building for the news and sports desks, central technology and distribution is visually divided into two parts – the base and the cantilevered upper floors. The building impresses with its excellent functional setting and aesthetic composition of all components. Inside, open static structures enable the horizontal tiering.



Service

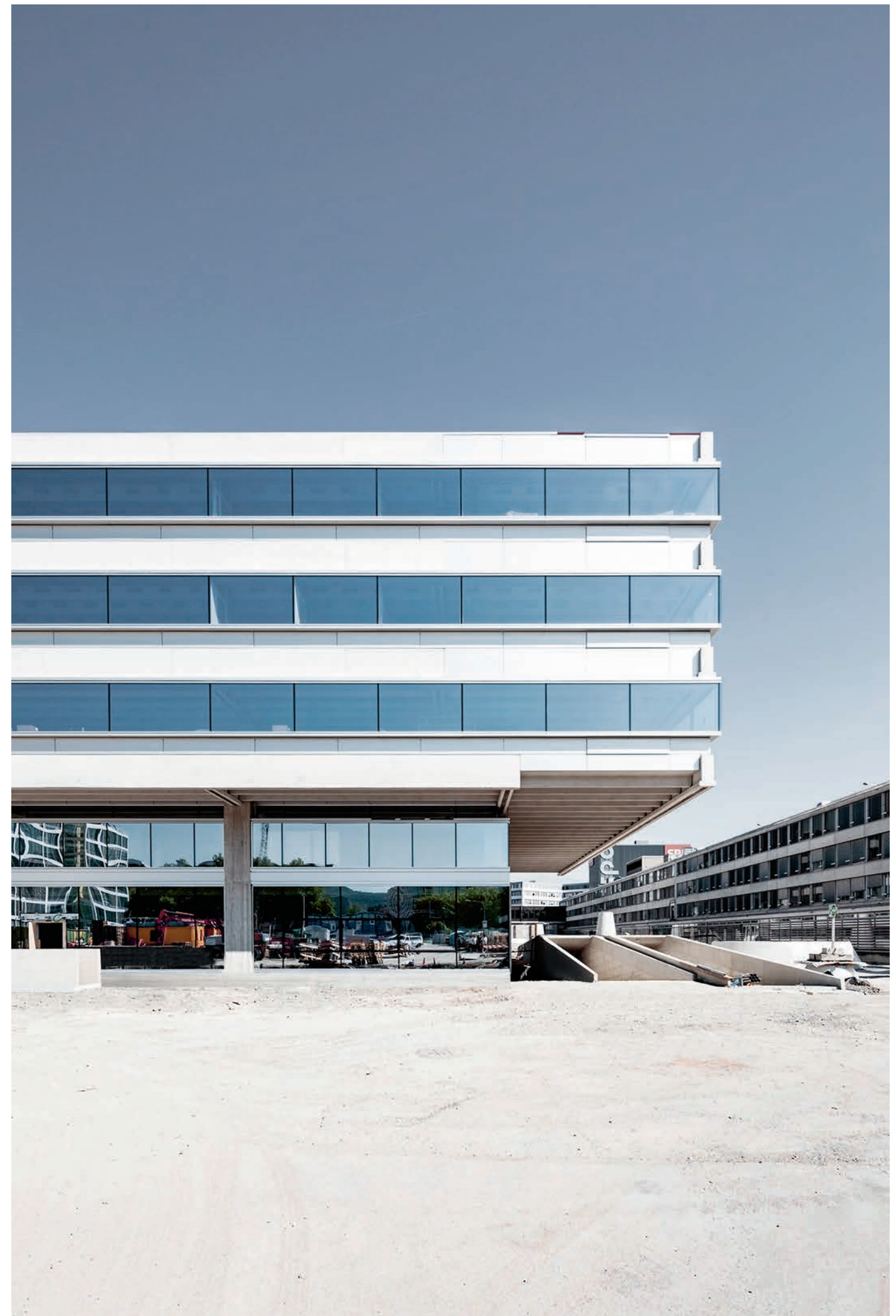
Façade engineering

Façade construction

Transom-mullion construction in aluminium

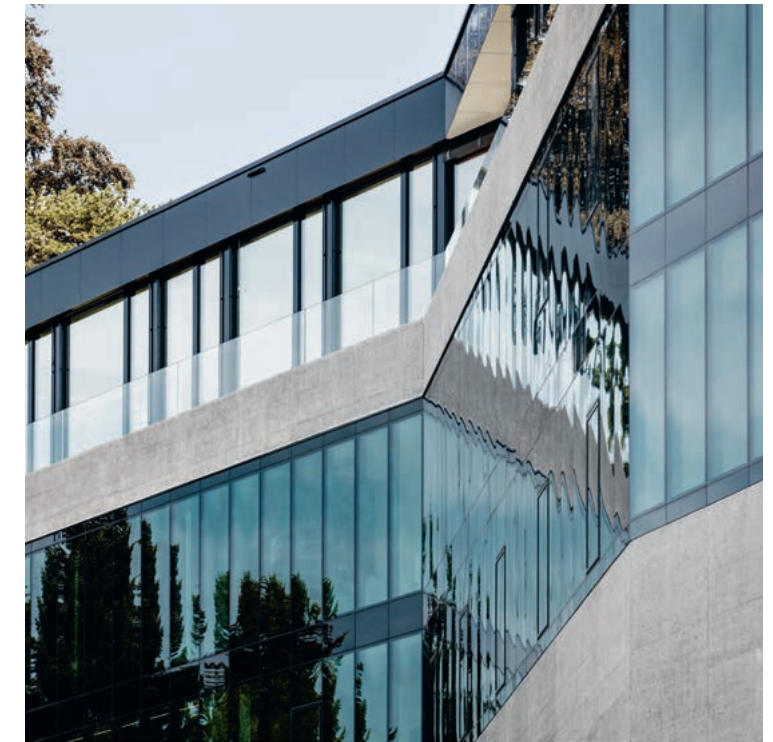
Facts

- Façade glazing partly in an all-glass design
- External cladding
- Transparent components
- Outer doors
- Shading



Bellavista eye clinic Speicher

Integrated perfectly into its hillside location, this clinic building captivates the beholder with its tintable all-glass façade. The SageGlass façade flush with the exposed concrete façade regulates light and heat individually without shading. The result is maximum indoor comfort.



Service

Façade engineering

Façade construction

Transom-mullion construction with electrochromic glass

Facts

- 450 m² all-glass façade with electrochromic glass
- Sliding fire protection doors

No compromise.

Creativity, technology and craftsmanship

We developed air-lux in 2004 – and, in doing so, combined creativity, technology and Swiss precision craftsmanship with more than 50 years of experience in façade engineering. air-lux is an uncompromising glass façade system with sliding floor-to-ceiling windows and a patented pneumatic sealing concept. As a Swiss metal construction company and glass façade specialist, we also fit entire building envelopes with air-lux.

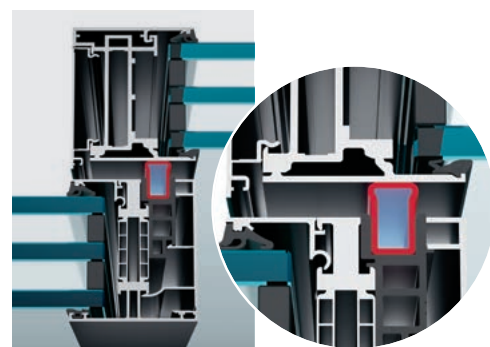
Whether for individual sliding windows or multistorey glass façades, as a standard design or a special solution – with air-lux, we provide guaranteed expertise, creative problem-solving skills and professional service from planning to manufacture and on-site assembly. In Switzerland and around the world.



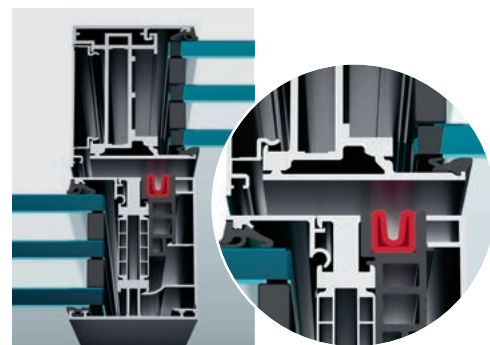
Invisible. But 100% im- permeable.

Patented air-assisted sealing system

With the patented pneumatic sealing system, air-lux sliding windows guarantee outstanding structural integrity. When they are closed, the perimeter ring seal ensures 100% impermeability against driving rain, wind and noise. Unlike systems with sealing lips or brushes, this invisible, almost maintenance-free air-lux technology ensures consistent performance of the air seal without signs of wear. This leads to very low maintenance costs and an improved return on investment (ROI).



Seal active



Seal inactive



Archi- tectural free- dom.

Individual, flexible design

Whether the aim is clean and reduced or striking and exclusive, air-lux gives builders and architects practically unlimited design freedom to create groundbreaking architecture with glass façades.

air-lux can be individually matched to any property, integrating into the building envelope without a sill – for frameless window façades of unique dimensions. It is also easy to integrate standard windows, balcony and entrance doors, and tilt-and-turn windows

into the air-lux system. Thanks to uniform profile technology, the combination of elements is visually imperceptible. This gives architects and builders practically unlimited design freedom – for private villas and high-rise buildings alike.

air-lux connect

Beyond the standard anodised aluminium and powder-coated surfaces, we have also developed air-lux connect. This unique fusion of materials combines an aluminium core with elegant wood in the interior and/or solid bronze on the exterior – for unprecedented design freedom.



<div>Page 12</div> <div>FHS St.Gallen</div> <div>Architect: giuliani.hönger Architekten, Zurich</div> <div>Photo: Wicono Hydro Building Systems AG</div>	<div>Page 33</div> <div>Zurich 7</div> <div>Architect: wild bär heule architekten ag, Zurich</div> <div>Roger Frei, Zurich</div>
<div>Page 14</div> <div>Bleicherweg 21, Zurich</div> <div>Architect: Märkli Architekt, Zurich</div> <div>Photo: Kuster Frey, Horw</div>	<div>Page 35</div> <div>B125 high-rise, Zug</div> <div>Architect: Philipp Brühwiler, Zug</div> <div>Photo: Valentin Jeck, Stäfa</div>
<div>Page 16</div> <div>Modissa clothing store, Zurich</div> <div>Architect: Steigerconcept AG, Zurich</div> <div>Photo: Marc Straumann</div>	<div>Page 37</div> <div>Diakonie, Buckhauserstrasse 34-36, Zurich</div> <div>Architect: E2A/Piet Eckert and Wim Eckert Architekten, Zurich</div> <div>Photo: Daniel Ammann, Herisau</div>
<div>Page 18</div> <div>Natural History Museum St.Gallen</div> <div>Architect: Armon Semadeni, Zurich</div> <div>Photo: Daniel Ammann, Herisau</div>	
<div>Page 20</div> <div>Zollikerberg hospital</div> <div>Architect: Silvia Gmür Reto Gmür Architekten, Basel</div> <div>Photo: Stefan Küng, Uster</div>	
<div>Page 22</div> <div>White Cube, Vaduz</div> <div>Architect: Morger Partner Architekten, Basel</div> <div>Photo: Valentin Jeck, Stäfa</div>	
<div>Page 24</div> <div>Just Schweiz AG, Walzenhausen</div> <div>Architect: rlc Architekten, Rheineck</div> <div>Photo: Just Schweiz AG, Walzenhausen</div>	
<div>Page 26</div> <div>One-One high-rise, Cham</div> <div>Architect: CSL Partner Architekten, Zug</div> <div>Photo: Valentin Jeck, Stäfa</div>	
<div>Page 28</div> <div>SRF site, Zurich Leutschenbach</div> <div>Architect: Penzel Architektur GmbH, Zurich</div> <div>Photo: Daniel Ammann, Herisau</div>	
<div>Page 30</div> <div>Bellavista Eye Clinic, Speicher</div> <div>Architect: Carlos Martinez Architekten, Berneck</div> <div>Photo: Daniel Ammann, Herisau</div>	